

AMHEC DIALOGUE DAY 2014

Thursday 9th October 2014

Woburn House, London, WC1H 9HQ

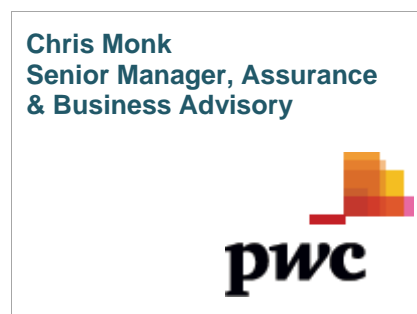
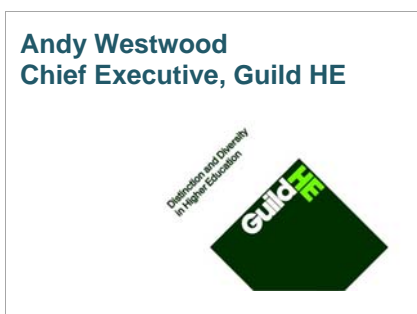


Association of Managers in Higher Education

To be opened by **Andy Westwood, Chief Executive of GuildHE**, with an overview of the sector post 2014-15 recruitment, our Dialogue Day will focus on two key issues at this significant time for the sector as we approach an open, competitive market:

- **Session 1 – Jim Tudor, The Future Index**
 - how Universities respond to the removal of student number controls in terms of the marketability of our offer, competition and differentiation in a context of high regulation;
- **Session 2 - : Chris Monk, Senior Manager, Assurance & Business Advisory, PWC**
 - risk benchmarking, the profile of risks for the sector and how we as managers and leaders need to manage and respond to them.

As with previous Dialogue Days, whilst we will have expert presentations on both these topics, they will lead into workshop-style discussions so we can explore challenges for our own institutions, share ideas and good practice. Andy Westwood will end our day sharing his thoughts on the key risks and threats for the sector and why, despite these, we should be optimistic about the future of UK higher education. It is sure to be an enjoyable and informative day!



9.00 am	Registration & Refreshments
9.30 am	Welcome from Anthony Parker, Chair, AMHEC
9.45 am	Andy Westwood, Chief Executive, GuildHE
10.00 am	Session 1: Jim Tudor, The Future Index
10.45 am	Mid-Morning Refreshment
11.00 am	Workshop: Session 1
12.15 pm	Feedback & Discussion
12.45 pm	Lunch
1.30 pm	Session 2: Chris Monk, Senior Manager, Assurance & Business Advisory, PWC
2.15 pm	Workshop: Session 2
3.30 pm	Feedback & Discussion: [including afternoon refreshments]
3.45 pm	Andy Westwood
4.00 pm	Closing Comments